

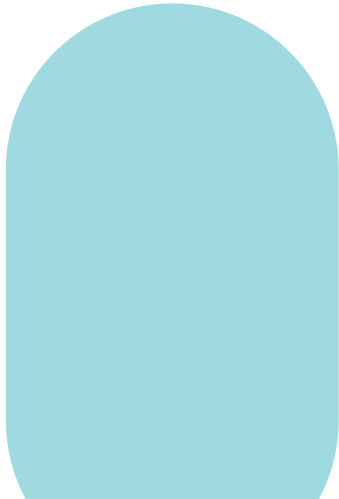
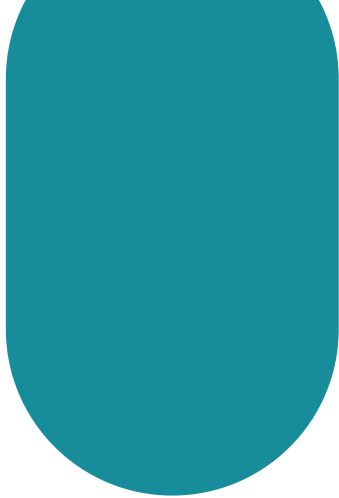


# 2024 Community Impact Report





4	<b>Introduction</b>
6	<b>Grants</b>
12	<b>Sponsorships and Programs</b>
16	<b>Worksite Campaigns</b>
20	<b>Environmental Impact</b>





**Difference Making**

Being difference makers in the communities we serve remained a focus for American Fidelity and our American Fidelity Foundation in 2024. Our Company and Colleagues donated time and funds through our Regional Food Bank of Oklahoma Food and Fund Drive, annual Allied Arts and United Way campaigns, our sponsorship of Oklahoma City Thunder literacy programs and more.

In 2024 we were excited to continue our MathCounts event with our highest attended event yet, and our tutoring program with Buchanan Elementary, allowing Colleagues the opportunity to make a difference for the youth in our community. AF hosted 15 teachers in our STEM Fellowship program and provided them each with a \$2,000 stipend to purchase supplies to help them continue making a positive difference in their students’ lives.

Colleagues again were able to volunteer their time to the charitable organizations that mean the most to them and earned volunteer and bard service grant funds for the organizations.

American Fidelity, the Foundation and our Colleagues remain dedicated to making a difference in the communities we serve.



**Here are a few of the ways**  
we supported the community in 2024.



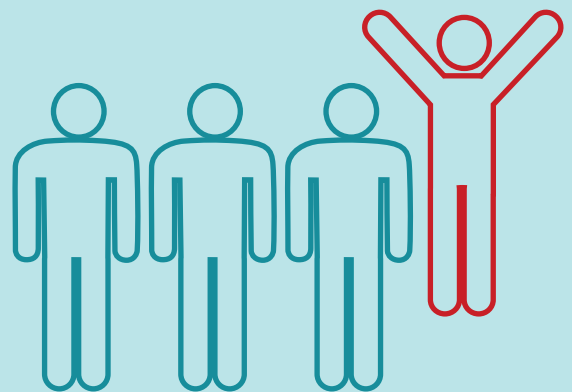
**TOTAL GIVING**  
**\$2,511,383**

American Fidelity and the American Fidelity Foundation proudly support organizations that make a difference in the communities we serve. We are dedicated to being **difference makers in the community.**



**COLLEAGUE RELIEF FUND**

Colleagues experiencing emergency situations that cause financial hardships can apply for financial assistance from our Cameron Companies Colleague Relief Fund.



**106**  
Colleagues have benefitted from the Colleague Relief Fund

**CORPORATE GIVING**

**\$130,839**



**COLLEAGUE DONATIONS MATCHED BY AF FOUNDATION**

**\$66,357**

**COLLEAGUES PARTICIPATED IN MATCHING**

**106**

**AF FOUNDATION**

**\$2,380,544**

**ORGANIZATIONS RECEIVED MATCHING FUNDS FROM THE AF FOUNDATION**

**77**





# 201

UNIQUE ORGANIZATIONS HELPED

A Chance to Change Foundation  
Allied Arts Foundation  
Abbott House Child Advocacy Center  
Alzheimer's Association Oklahoma Chapter  
American Academy in Rome  
American Cancer Society  
American Heart Association  
American Kidney Fund  
American Red Cross  
Arise Single Moms  
Arkansas Sheriffs' Youth Ranches, Inc.  
Arts Council of Oklahoma City  
AutismOklahoma.org  
Bethany Children's Health Center  
Big Brothers Big Sisters of Oklahoma  
Bishop McGuinness  
Boys & Girls Club of Oklahoma County  
Breakthrough T1D  
Brendon McLarty Memorial Foundation  
Calm Waters Center for Children and Families  
Canterbury Voices  
CASA of Oklahoma County  
Catholic Charities  
Catholic Foundation of Oklahoma  
Catholic Medical Mission Board  
Christian Business Men's Connection Oklahoma  
Center for Children and Families, Inc.  
Center of Family Love  
Children's Health Foundation  
Christ the King School  
Christian Appalachian Project  
Christmas Connection  
City Care  
City Rescue Mission

Colonial Williamsburg Foundation  
Community Literacy Centers  
Compassion International  
CornerStone International  
Creative Oklahoma  
Cristo Rey Oklahoma City Catholic High School  
Daily Living Centers  
Dallas Wings Community Foundation  
deadCENTER Film  
Dean McGee Eye Institute Foundation  
Dinner With Love Foundation  
Doctors Without Borders USA  
Down Syndrome Association of Central Oklahoma  
Downtown Oklahoma City Initiatives  
Drake University  
Eastern Oklahoma County Resource Center  
Edmond North Wrestling Club  
Edmond Public School Foundation  
Executive Service Corps of Central Oklahoma  
Fields & Futures Foundation  
First Americans Museum Foundation  
First Tee of Metropolitan Oklahoma City  
Focus on Home  
Food for the Hungry  
Free To Live  
Freedom City, Inc.  
Girl Scouts Western Oklahoma  
Gold4Kids Cancer Foundation of Tulsa  
Goodwill Industries of Central Oklahoma  
Great Expectations Foundation  
Ground Zero Emergency Training Center  
Harding Fine Arts Academy Foundation  
Health Alliance for the Uninsured  
Heartland Rabbit Rescue Fund

HeartLine, Inc.  
Heroes in Waiting  
Hillsdale College  
HOBY Ohio South  
Hope United  
i2E, Inc.  
Infant Crisis Services  
INTEGRIS Health Foundation  
International Children's Fund  
International Gymnastics Hall of Fame  
Intervention and Crisis Advocacy Network  
Jackson State University Development Foundation  
Jim Thorpe Association  
John Marshall High School Foundation  
John Rex Elementary PTA  
John W. Rex Charter Elementary School  
Junior Achievement of Oklahoma  
K9s For Warriors, Inc.  
KIPP OKC College Prep  
Last Frontier Council / Boy Scouts of America  
Latino Community Development Agency  
Leadership Oklahoma City  
Library Endowment Trust  
Lyric Theatre of Oklahoma  
Make-A-Wish Oklahoma  
March of Dimes  
Maui Health Foundation  
McCall's Chapel School  
Mercy Health Foundation Oklahoma City  
Midtown Community Development Fdtn.  
Miriam's House  
Mount St. Mary's University  
Mutt Misfits Society  
Myriad Gardens Foundation



**James** and many other students from low-income households receive music instruction for 50 cents per lesson with help from Allied Arts funding. Through your donation, they learn discipline and gain confidence from regular lessons.





201 UNIQUE ORGANIZATIONS HELPED CONTINUED

National Cowboy & Western Heritage Museum  
Neighborhood Alliance of Central OK  
Neighborhood Services Organization  
NewView Oklahoma  
Next Gen Under 30 Foundation  
Nichols Hills Parks, Inc.  
North OKC Soccer Club, Inc.  
Northeast Oklahoma Association of Homeschools  
Oklahoma Appleseed Center for Law and Justice  
Oklahoma Center for Nonprofits  
Oklahoma Children's Theatre  
Oklahoma Christian University  
Oklahoma City Ballet  
Oklahoma City Beautiful  
Oklahoma City Community College Foundation  
Oklahoma City Museum of Art  
Oklahoma City National Memorial Foundation  
Oklahoma City Philharmonic  
Oklahoma City Public Schools Foundation  
Oklahoma City University  
Oklahoma Cleats for Kids  
Oklahoma Contemporary Arts Center  
Oklahoma Council on Economic Education  
Oklahoma Engineering Foundation  
Oklahoma Foundation for Excellence  
Oklahoma Hall of Fame  
Oklahoma Humane Society  
Oklahoma Israel Exchange  
Oklahoma Medical Research Foundation  
Oklahoma Project Woman  
Oklahoma School of Science and Mathematics Foundation  
Oklahoma Shakespeare in the Park  
Oklahoma State Fair

Oklahoma Youth Orchestras  
Oklahoma Zoological Society  
Oklahomans for the Arts  
Olin College of Engineering  
Oklahoma State University Foundation  
University of Oklahoma Foundation  
Pancreatic Cancer Action Network  
Parkinson Foundation of Oklahoma  
Paseo Arts Association  
Peaceful Family Oklahoma  
PEARSON Foundation  
Pelotonia  
Pets and People Humane Society  
Pittsburg State University Foundation  
Pivot, Inc.  
Polished Network, Inc.  
Positive Tomorrows  
Possibilities, Inc.  
Project31  
Putnam City Schools Foundation  
RACE Dance Collective  
Rainbow Fleet  
Regional Food Bank of Oklahoma  
ReMerge of Oklahoma County, Inc.  
Riding On Insulin  
RIVERSPORT Foundation  
Roanoke College  
Rokability, Inc.  
Santa Fe Family Life Center  
Science Museum Oklahoma  
Scissortail Park Foundation  
SixTwelve, Inc.  
Special Care, Inc.

Special Olympics Oklahoma  
St. Anthony Foundation  
St. Jude Children's Research Hospital  
St. Luke's United Methodist Church  
Sunbeam Family Services  
Teach For America  
Tenaciously Teal  
The Education and Employment Ministry  
The Homeless Alliance  
The NEA Foundation  
The Oklahoma Academy  
The Oklahoma Caring Foundation  
The Salvation Army  
The Toby Keith Foundation  
Tri Delta's Foundation  
Tulsa Community Foundation - Cameron Classic Fund  
United Way of Asheville & Buncombe Cnty  
United Way of Central Oklahoma  
University of Central Oklahoma Foundation  
University of Southern Mississippi Foundation  
Urban League of Greater Oklahoma City  
Variety Care Foundation  
Wes Welker Foundation  
Western Plains Youth and Family Services  
Westminster School  
William Carey University  
Wings Special Needs Community  
World Central Kitchen  
WovenLife  
YMCA of Greater Oklahoma City  
Youth Scratch Master's Tour  
Youth Villages Foundation  
YWCA Oklahoma City





## 2024-25 THUNDER READING CHALLENGE

3 MONTHLY CHALLENGES  
MORE THAN **2.8 MILLION MINUTES**  
READ BY **7,050 STUDENTS**.



## TEACHER OF THE GAME

IN PARTNERSHIP WITH THE NBA'S OKLAHOMA CITY THUNDER,  
**692 TEACHERS** HAVE BEEN HONORED SINCE 2008,  
WITH **41 IN THE SPOTLIGHT** THROUGH THE 2024-25 SEASON.



## THUNDER BOOK BUS

IN 2024-25 SEASON WE DISTRIBUTED **13,558 BOOKS**  
TO STUDENTS IN **130 DIFFERENT VISITS** ACROSS OKLAHOMA.

AS OF JUNE, 2025, WE'VE GIVEN AWAY MORE THAN **238,215 BOOKS**,  
THROUGH MORE THAN **3,130 VISITS** SINCE INCEPTION.

## THUNDER READING TIMEOUTS

WE SPONSORED SIX IN-PERSON READING TIMEOUTS IN THE  
2024-25 SCHOOL YEAR WITH **11 THUNDER ENTERTAINERS**  
IN ATTENDANCE.

**180 STUDENTS** IMPACTED

## THUNDER EDUCATOR OFFER

WORKING WITH THE OKLAHOMA CITY THUNDER, WE PROVIDE AN EXCLUSIVE TICKET OFFER TO EDUCATORS ACROSS OKLAHOMA.  
IN THE 2024-25 SEASON, NEARLY **6,500 FREE TICKETS** WERE REDEEMED BY EDUCATORS.

## 2024 Community Impact Report Sponsorships & Programs



### KMGL Teacher of the Month

**Eight teachers** were honored during the 2024-25 school year, each receiving recognition on the radio broadcast and **\$250**.



### STEM Teachers Join AF

AF hires STEM teachers over the summer to provide real-world experience they can take back to their students. Teachers **earn a corporate IT** salary while at AF and a stipend for classroom supplies.

**96 teachers** from 50 school districts have participated since program inception in 2018.

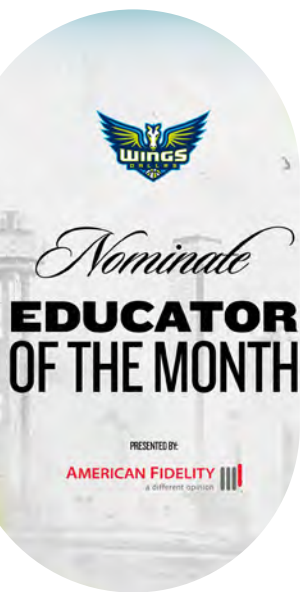
2025 – **15 teachers** from 14 districts.



### John Rex Scholarship Keeps Giving

Colleagues' children in undergraduate programs can apply for a **\$2,000 annual scholarship**, with the potential up to **\$8,000**. Three students receive the scholarship each year, one being designated to go to a minority student.

**40 scholarships** have been given since inception in 2007.



### Proudly Supporting the WNBA Dallas Wings

Honored **18 educators** at home games last season.

Sponsored Dallas Wings **Educator of the Month** in 2024

**4 educators** recognized

Sponsored **Teachers' Lounge Makeover** for one Dallas school



### Paid Volunteer Time

Colleagues can use up to **16 hours** of Paid Volunteer Time per year to volunteer at charitable organizations that are important to them.

In 2024, Colleagues used **2,535 hours** of paid volunteer time for non-profit organizations.



### Helping Cristo Rey Students Grow

American Fidelity hosted **four Cristo Rey students** at our office during the 2024-25 school year, allowing them to gain work experience in areas at AF.

Program began in **2018-19 school year**

Hosted **28 students** since program inception

## 2024 Community Impact Report Sponsorships & Programs



### Granting Opportunities

Volunteer Grants allow Colleagues to earn **\$10 per hour** for non-profit charitable organizations they volunteer for.

**\$1,534 paid** to organizations in 2024

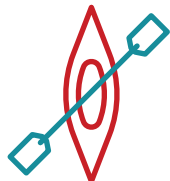
Board Service Grants allow Colleagues serving on non-profit charity boards to request a \$1,000 donation in their name for the organization they serve.

**\$12,000 paid** in 2024



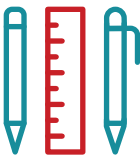
### Community Connection

Our online forum allows Colleagues to share volunteer opportunities, donation needs and community fundraisers.



### RIVERSPORT Adventure Thrive Outside Sponsor 2022-2024

The AF Foundation sponsored Thrive Outside, supporting the encouragement of a culture shift for our youth to lead more active, outdoor lifestyles.



### Buchanan Elementary Support

AF has been supporting students and staff at Buchanan Elementary for **more than 16 years**.

18 Colleagues spent time tutoring a student one hour each week of the 2024-25 school year.

Each year we provide all staff members with a T-shirt to proclaim their affiliation with the school.

AF donated lunches to celebrate Teacher Appreciation Week, facility space for leadership training and more during the 2024-25 school year.

AF and Colleagues **donated \$1,606** in our annual school supply drive.





**Giving Blood, Saving Lives**

In 2024 AF hosted five blood drives and **225 whole blood donations** were made by our Colleagues, saving **675 lives**.



**AF Community Heroes Assembled for United Way**

As a Pacesetter company, American Fidelity was proud to surpass our donation goal once again in 2024! From T-shirt sales to bake sales, nacho bars and ice cream bars to smores, dodgeball and more, AF and **our Colleagues showed up for United Way**.

**\$491,128** Colleague donations

**\$225,000** Foundation match

**\$716,128** total donated

**Allied Arts**

In 2024, AF Colleagues **donated to the arts** in OKC with bake sales, friendship bracelets, an arts auction and raffles.

**\$125,887** total donated





Monthly Chari-Tee Days

Charities nominated by Colleagues and selected by random drawing receive a **\$2 donation** from Colleagues who elect to donate.

Colleagues enrolled in payroll deduction receive a free “chari-tee” each year to showcase their support.

**\$1,130 donated** monthly on average

Colleagues donated **\$13,555 in 2024**

Keaton’s Kindness Foundation	Chad Tough Defeat GIPG Foundation	City Care OKC The Odyssey Project	The Cure Starts Now
JANUARY	FEBRUARY	MARCH	APRIL
Restore Farms	Metropolitan Better Living Center	Buchanan School Supply Drive	Solve M.E.
MAY	JUNE	JULY	AUGUST
Colleague Relief Fund	Colby’s Crew Rescue	Hope After Loss – Hope is Alive	The Dragonfly Home
SEPTEMBER	OCTOBER	NOVEMBER	DECEMBER

2024 Community Impact Report Worksite Campaigns

Regional Food Bank of Oklahoma Food and Fund Drive

Colleagues and AF came together to help fight hunger in Oklahoma

**\$17,558** Colleague donations

**\$8,754** Foundation match

**\$26,312** total donated

Salvation Army Angel Tree

American Fidelity Colleagues came together, adopted angels and provided Christmas for **96 children and elderly adults**.

OKC Public Schools Workplace Tours

AF hosted **30 Oklahoma City Public Schools students**, helping them learn about careers at American Fidelity.

MATHCOUNTS

American Fidelity hosts a MATHCOUNTS warmup event for schools around the state, helping students prepare for MATHCOUNTS competitions.

Nearly **100 middle school students** attended. MATHCOUNTS





**American Fidelity's Green Team** makes recommendation for environmental/ sustainability-related community involvement, Company education and initiatives. They work to educate Colleagues on ways to support sustainability at work and at home, make recommendations for Company Earth Day activities and more.

**Reduce, Reuse and Recycle**



- o A battery-recycling box is available for Colleagues to deposit their household batteries and keep them out of the landfills.
- o Each floor throughout the building is equipped with a water fountain designed to refill bottles.
- o Each floor throughout the building has designated recycling bins.
- o The building's HVAC equipment has been updated to be more environmentally friendly, and lighting throughout the building was converted to LED fixtures in an effort to reduce our carbon footprint.
- o Our carpet floor tiles are Cradle to Cradle certified.
- o Colleagues are printing double-sided when paper is necessary. We use the Secure Print function that has been effective in helping eliminate waste. Tens of thousands of pages of paper are saved with this function.
- o We have an EV charging station available for Colleagues to use at the office.

**AF Pressing** the environmental issues



Our onsite print shop uses paper that comes from mills that receive their wood from sources that practice responsible forestry management, and when possible, the paper also includes recycled materials.



The equipment does not require solvents or other harmful chemicals that are commonly used for cleaning; an alcohol-based solution is used.



A device perforates and crunches used cardboard boxes, creating a void fill material, which is used for packaging instead of plastic air pillows, when possible.

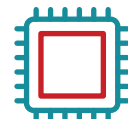




**AF Pressing** the environmental issues



A just-in-time business model is in place for production printing, which eliminates the need for departmental storage rooms across the Company. Documents are printed as needed, which has reduced corporate document storage needs from about 3,000 square feet to 400.



The electronics in our equipment are ROHS compliant with the Restriction of Hazardous Substances standard.



All electronic devices that need to be retired are sent through a recycling process that destroys machines in an environmentally responsible manner.





# **AMERICAN FIDELITY CORPORATION**

9000 CAMERON PARKWAY  
OKLAHOMA CITY, OK 73114

**[americanfidelity.com](https://americanfidelity.com)**